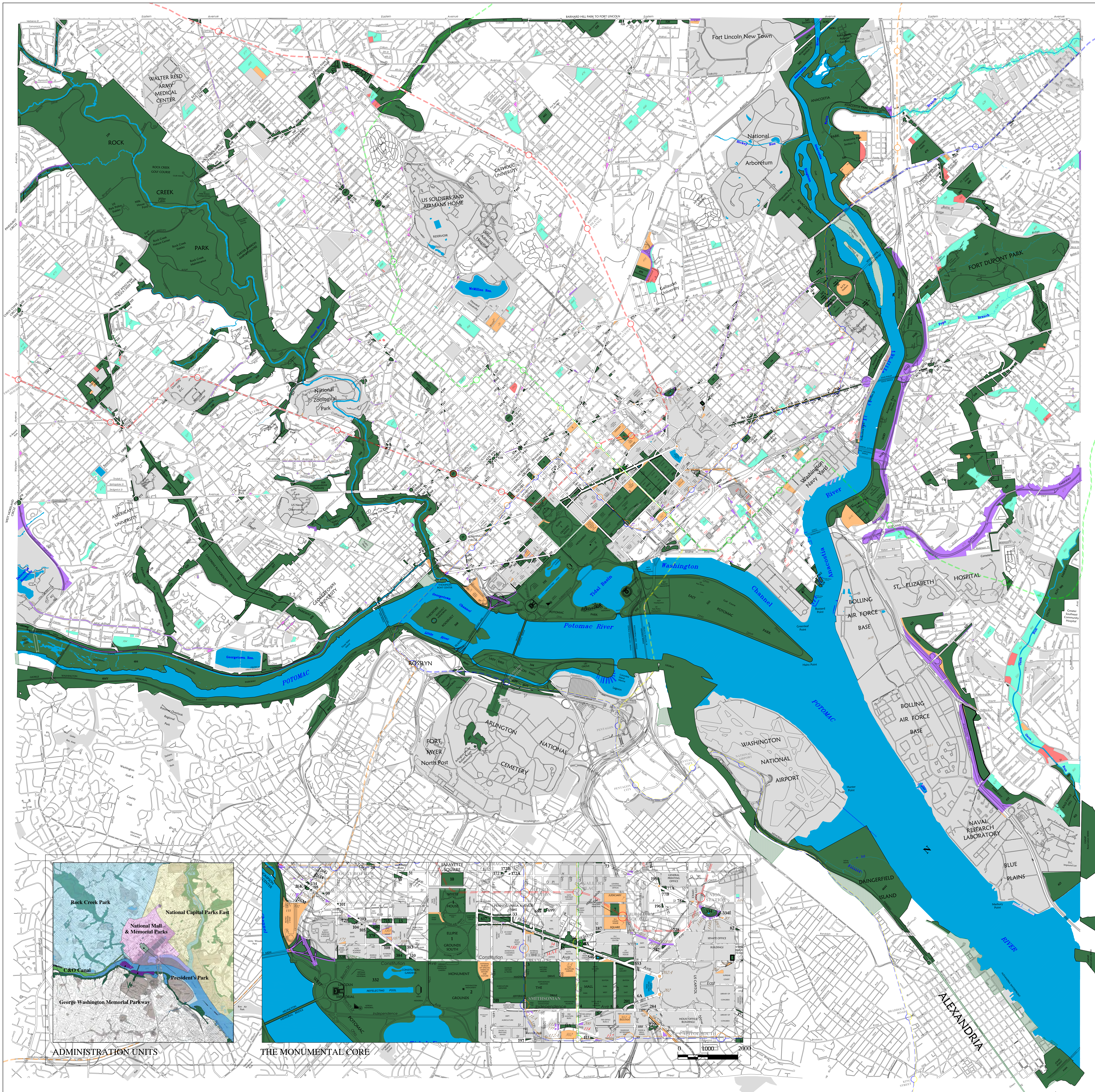


APPENDIX A



Not all sidewalks under the jurisdiction of the National Capital Area of the National Park Service, pursuant to D.C. Code § 8-138, have been marked.

Cartographic services provided by
Land Resources Program Center
National Capital Region

<div></div>	NATIONAL PARK SERVICE JURISDICTION	<div></div>	TRANSFERRED TO DISTRICT FOR COMPREHENSIVE PLAN
<div></div>	SCENIC EASEMENTS/ RIGHTS IN LANDS	<div></div>	TRANSFERRED TO DISTRICT FOR RECREATION
<div></div>	AIR RIGHTS	<div></div>	TRANSFERRED TO DISTRICT FOR SCHOOL
<div></div>	OTHER GOVERNMENT LANDS	<div></div>	TRANSFERRED TO DISTRICT FOR TRANSPORTATION
<div></div>	RESERVATION DISPOSED	<div></div>	TRANSFERRED FOR OTHER PURPOSES
<div></div>	NPS RESERVATION NUMBER	<div></div>	TRANSFERRED RESERVATION
<div></div>	300	<div></div>	300

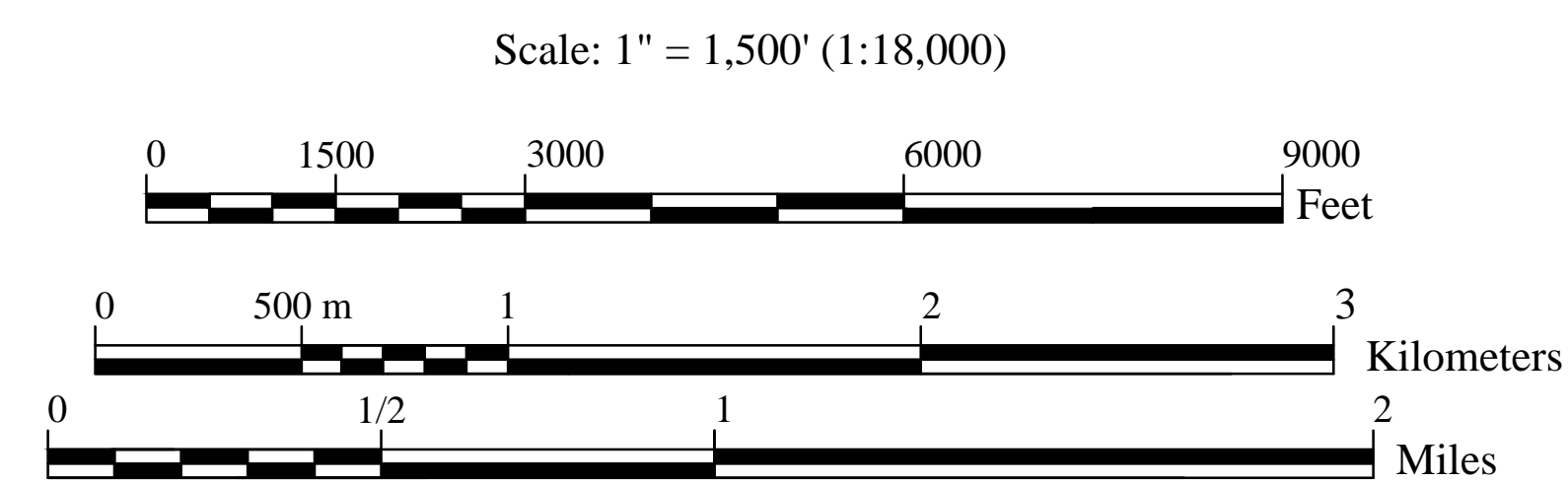
LAND MANAGEMENT STATUS


PARK SYSTEM OF THE NATIONS CAPITAL

UNDER JURISDICTION OF

NATIONAL CAPITAL REGION - NATIONAL PARK SERVICE

UNITED STATES DEPARTMENT OF INTERIOR




Published by
National Capital Region
Land Resources Program Center
1100 Ohio Drive, S.W.
Washington, D.C. 20242
MARCH 2022*
NPS 869/80,252A

*The March 2022 update reflects select name changes only. Otherwise, the map is identical to the last published version dated March 2016.